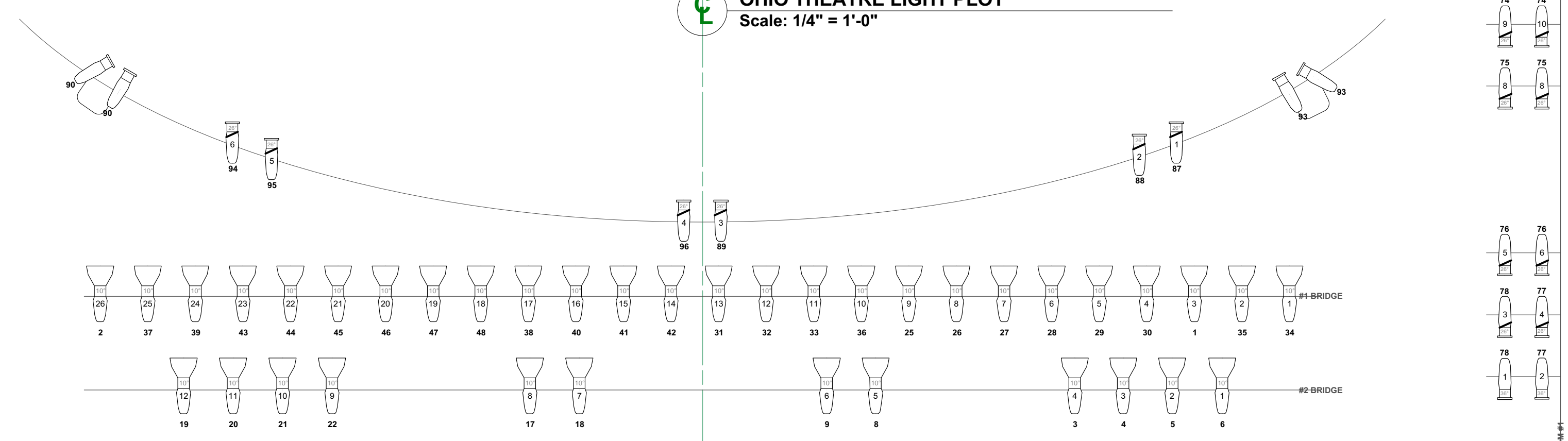


- 51
  - 50 FULL STAGE BLACK
  - 49 WHITE BOUNCE
  - 48
  - 47
  - 46 WHITE FILLED SCRIM
  - 45
  - 44
  - 43 ELECTRIC #6
  - 42
  - 41 BLACK SCRIM
  - 40 LEGS
  - 39 BORDER
  - 38
  - 37
  - 36 ELECTRIC #5
  - 35
  - 34
  - 33 ELECTRIC #4
  - 32
  - 31
  - 30
  - 29 LEGS
  - 28 BORDER
  - 27 SPLIT TRAVELLER
  - 26
  - 25
  - 24 ELECTRIC #3
  - 23
  - 22
  - 21
  - 20 ELECTRIC #2
  - 19
  - 18 LEGS
  - 17 BORDER
  - 16
  - 15
  - 14
  - 13 ELECTRIC #1A
  - 12
  - 11 LEGS
  - 10 BORDER
  - 9
  - 8
  - 7
  - 6
  - 5
  - 4
  - 3 ELECTRIC #1
  - 2 TORMENTOR
  - 1 TEASER
- HOUSE CURTAIN
- LINE OF PROSCENIUM PILASTER @ 9'-0"

**OHIO THEATRE LIGHT PLOT**  
Scale: 1/4" = 1'-0"



**Instruments**

- SL26
- SL36
- 8" Fresnelite
- L&E 65 Series 3-cell Cyc
- SL10
- SL19

**Legend**

- Color
- Dimmer
- LN# Number

