

UPCOMING WEEKS VOLUNTEER NEEDS AND RUNNING TIMES

95%

TIM ALLEN

KeyBank State Theatre || approx. 90 min.
September 30

- [SA 9/30 5:30 PM](#)

You may send in an email for the show and will be notified on Thursday if you are randomly selected to **volunteer** for the performance.



NEW SHOW ADDED - EXTRAS NEEDED

CARMEN & OTHER WORKS

Connor Palace Theatre || approx. 90 min.
September 22 – 23

- [SA 9/23 5:30 PM](#)



EDDIE IZZARD

Connor Palace Theatre || approx. 120 min.
September 27

- [WE 9/27 6:30 PM](#)

MEDICAL EMERGENCIES

Although it may be a rare occurrence when you are volunteering, medical emergencies do arise in the theaters frequently.

It is the responsibility of the House Managers to coordinate emergency response and directly assist the individual(s) in distress. The House Managers and Security Staff are trained to take action in medical emergencies.

In the case of a medical emergency the first RedCoat to reach the person in need should stay with the person and send someone to find a House Manager. House Managers have been trained in CPR, First Aid, and AED.

If the house managers ask you to assist with the medical emergency, please follow their directions.

If you are not involved with the medical emergency, please return to the theater to continue your volunteer responsibilities.

We appreciate everyone's support and concern for the health and safety of all at Playhouse Square.



PRETZEL ETIQUETTE

Those pretzels are GOOD! Really good!

So good you want to have two, or three, or more!
So good you want to share them with friends and family, and your neighbor, and the dog, and the neighbor's dog...

They are that good.

Each RedCoat should only take a single pretzel so that everyone who volunteers has the opportunity to share in all that goodness. **Please be considerate of your fellow volunteers and take just one pretzel.**

Please also wait to consume all of that goodness until you have left the theater! **Please don't eat the pretzels in front of our guests. Thank you!**



MUMMIES OF THE WORLD EXHIBIT

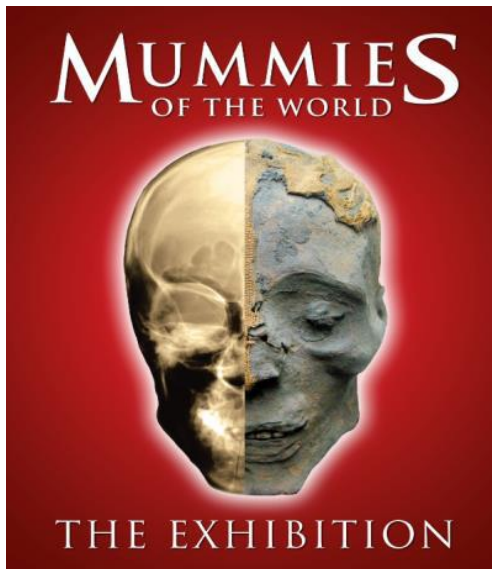
The Volunteer Department underestimated the amount of interest in volunteering for this exhibit! Because this exhibit is scheduled through January, we are opening additional shifts in October. Please note: extra shifts may be available on Tuesdays or Wednesdays if school groups are scheduled. These will be noted on upcoming schedules.

Each shift will offer DOUBLE HOURS!!

Four volunteers will be needed for each 4-hour shift.
Positions rotate throughout each shift.

**SEE A PART OF HISTORY –
BE A PART OF HISTORY**

SCHEDULE YOUR SHIFT TODAY!



- [SU 10/1 10:30 AM](#)
- [SU 10/1 2:00 PM](#)
- [TH 10/5 11:30 AM](#)
- [TH 10/5 4:00 PM](#)
- [FR 10/6 11:30 AM](#)
- [FR 10/6 4:00 PM](#)
- [SA 10/7 9:30 AM](#)
- [SA 10/7 1:00 PM](#)
- [SA 10/7 4:30 PM](#)
- [SU 10/8 10:30 AM](#)
- [SU 10/8 2:00 PM](#)
- [TH 10/12 11:30 AM](#)
- [TH 10/12 4:00 PM](#)
- [FR 10/13 11:30 AM](#)
- [FR 10/13 4:00 PM](#)
- [SA 10/14 9:30 AM](#)
- [SA 10/14 1:00 PM](#)
- [SA 10/14 4:30 PM](#)
- [SU 10/15 10:30 AM](#)
- [SU 10/15 2:00 PM](#)
- [TH 10/19 11:30 AM](#)
- [TH 10/19 4:00 PM](#)
- [FR 10/20 11:30 AM](#)
- [FR 10/20 4:00 PM](#)
- [SA 10/21 9:30 AM](#)
- [SA 10/21 1:00 PM](#)
- [SA 10/21 4:30 PM](#)

WELCOME SEPTEMBER!

We are just one month away from the start of the new season!

Cleveland Playhouse season has already begun and Great Lakes Theater season will begin this month.

In October, we kick off the Broadway Season with The Wiz! The Education Department's programming for schools also resumes in October! Prepare for the weekday matinees to return.



RUN TIMES

SHOW CANCELLED GRACIAS CHRISTMAS CANTATA

KeyBank State Theatre || 150 min.
September 12

LÚNASA

Hanna Theatre || approx. 120 min.
September 10 – **FULL Check back**

SHINING STAR CLEVELAND

Mimi Ohio Theatre || approx. 150
September 10

THURGOOD

Allen Theatre || 90 min.
September 12 – October 1

NEWSBOYS

Mimi Ohio Theatre || approx. 120 min.
September 14 – **FULL Check back**

JIM GAFFIGAN

KeyBank State Theatre || approx. 90 min.
September 14 – 15 – **FULL Check back**

CLEVELAND PRIDE BAND

Mimi Ohio Theatre || approx. 120 min.
September 16

THIS IS JESUS

Connor Palace Theatre || 120 min.
September 16 – **FULL Check back**

KATHLEEN MADIGAN

KeyBank State Theatre || 90 min.
September 16

HERB ALPERT & LANI HALL

Mimi Ohio Theatre || approx. 90 min.
September 17

THE TEMPEST

Helen Lab Theatre || 150 min.
September 20 – September 30

TINA & AMY

KeyBank State Theatre || approx. 150 min.
September 21 – 24 – **FULL Check back**

NICK CAVE

KeyBank State Theatre || approx. 12 min.
September 25