

## UPCOMING WEEKS VOLUNTEER NEEDS AND RUNNING TIMES



### EDDIE IZZARD

Connor Palace Theatre || approx. 120 min.  
September 27

- [WE 9/27 6:30 PM](#)



### DANCE SHOWCASE

KeyBank State Theatre || approx. 120 min.  
September 29

- [FR 9/29 5:30 PM](#)



### STAVROS HALKIAS

KeyBank State Theatre || approx. 120 min.  
October 7

- [SA 10/7 5:30 PM](#)



### RAPHAEL SAADIQ

KeyBank State Theatre || approx. 120 min.  
October 8

- [SU 10/8 6:30 PM](#)

## SERVICE PINS

We have had a number of questions regarding service pin distribution recently.

Pins are distributed during KeyBank Broadway and Huntington Bank series runs for weeknight and weekend volunteers. Pins may also be distributed before performances in the larger theaters (KeyBank State and Connor Palace).

Those on a weekday matinee crew will receive their pins at a scheduled performance.



Please note that it does take up to a week to reconcile the hours from each performance. The "Pins To Be Awarded" report is run once a month in order to ensure that those who have achieved a milestone are recognized in the monthly newsletter.

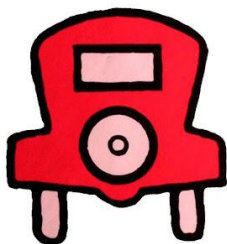
**You may earn a pin in one month and be recognized the next.**

## BROADWAY BUZZ

Because between 10 – 12 volunteers are assigned to each team, **ALL** Broadway Buzz events are full unless otherwise noted on the schedule.

## PARKING REMINDER

FREE



PARKING

Weeknight and weekend parking is always at the US Bank Garage. **You must park on levels 5 and above.**

If you are volunteering for a weekday matinee (TU - FR before 4 pm) you may **park on levels 4 and above** of the Playhouse Square Garage. Regular weekday matinee ushers will be issued a unique QR code for the Playhouse Square Garage.

If you have an accessible parking placard, you may **park on levels 4 and above** of the Playhouse Square Garage. Contact the Volunteer Office with your placard number and expiration date prior to utilizing this parking. You will be issued a unique QR code for the garage.

## MARQUEE MOMENTS – IMPORTANT INFORMATION



### JOIN US ON SEPTEMBER 28<sup>TH</sup>! Admission is free; no tickets required.

Marquee Moments will take place outdoors on Euclid Avenue right outside the Playhouse Square theaters beginning at 5:30pm on Thursday, September 28th. Performances by local artists and **multi-platinum artist Andy Grammer** will lead up to a dazzling finale: the lighting of Playhouse Square's new marquees and a spectacular digital installation.

#### ROAD CLOSURES – WE 9/27 at 9 a.m. through FR 9/29 at 9 a.m.

- Euclid Ave. closed from E. 13<sup>th</sup> St. to E. 17<sup>th</sup> St.
- E. 14<sup>th</sup> St. closed from Prospect Ave. to Euclid Ave.
- E. 17<sup>th</sup> St. from Chester Ave. to Prospect Ave.

Accessible drop-off and valet parking for Marquee Moments and performances in the Hanna Theatre will be located at the corner of Prospect and E. 14<sup>th</sup> St. Accessible drop-off and valet parking for performances in the Allen and The Helen theaters will be located on Dodge Court.

**Wednesday volunteers – enter the US Bank Garage on Prospect.**  
**Thursday volunteers – you will receive an email indicating where to park.**

#### Schedule of Events

5:30 p.m. Gates open and entertainment begins

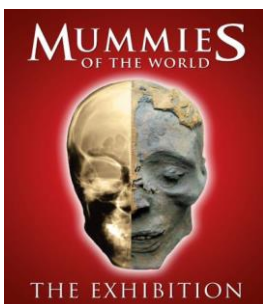
8:00 p.m. Performance by Andy Grammer

9:15 p.m. Marquee Moments lighting display spectacular presented by GE Lighting

#### Event Security

All bags and packages are subject to search. The following items are prohibited at this event: backpacks, large bags, firearms, weapons of any kind, umbrellas, blankets and chairs.

**Please note – unless you are volunteering on Thursday, parking for this event will not be provided.**



#### SHIFTS AVAILABLE:

- |                                     |                                     |
|-------------------------------------|-------------------------------------|
| • <a href="#">SU 10/22 10:30 AM</a> | • <a href="#">SA 10/28 4:30 PM</a>  |
| • <a href="#">SU 10/22 2:00 PM</a>  | • <a href="#">SU 10/29 10:30 AM</a> |
| • <a href="#">TH 10/26 11:30 AM</a> | • <a href="#">SU 10/29 2:00 PM</a>  |
| • <a href="#">TH 10/26 4:00 PM</a>  | • <a href="#">TH 11/2 11:30 AM</a>  |
| • <a href="#">FR 10/27 11:30 AM</a> | • <a href="#">TH 11/2 4:00 PM</a>   |
| • <a href="#">FR 10/27 4:00 PM</a>  | • <a href="#">FR 11/3 11:30 AM</a>  |
| • <a href="#">SA 10/28 9:30 AM</a>  | • <a href="#">FR 11/3 4:00 PM</a>   |
| • <a href="#">SA 10/28 1:00 PM</a>  |                                     |

## UPCOMING WEEKS VOLUNTEER NEEDS AND RUNNING TIMES



#### RYAN HAMILTON

Mimi Ohio Theatre || approx. 120 min.  
October 14

- [SA 10/14 6:30 PM](#)



#### DISNEY JUNIOR: COSTUME PALOOZA

KeyBank State Theatre || approx. 90 min.  
October 14

- [WE 10/18 5:00 PM](#)



#### SPIDER-MAN: INTO THE SPIDER-VERSE

KeyBank State Theatre || approx. 90 min.  
October 21

- [SA 10/21 6:30 PM](#)



#### THE WIZ

Connor Palace Theatre || 180 min. w/ I  
October 3 - 22

- [SA 10/7 6:00 PM](#)
- [SA 10/14 6:00 PM](#)
- [WE 10/18 6:00 PM](#)
- [SA 10/21 6:00 PM](#)
- [SU 10/22 5:00 PM](#)