

UPCOMING WEEKS VOLUNTEER NEEDS AND RUNNING TIMES



STAVROS HALKIAS

KeyBank State Theatre || approx. 120 min.
October 7

- [SA 10/7 5:30 PM](#) – **DOUBLE HOURS**



RAPHAEL SAADIQ

KeyBank State Theatre || approx. 120 min.
October 8

- [SU 10/8 6:30 PM](#) – **DOUBLE HOURS**



RYAN HAMILTON

Mimi Ohio Theatre || approx. 120 min.
October 14

- [SA 10/14 6:30 PM](#)



GROUNDWORKS DANCETHEATRE

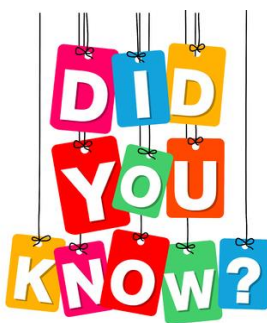
Allen Theatre || run time TBD
October 14

- [SA 10/14 6:00 PM](#)

MARQUEE MOMENTS!



PLAYHOUSE SQUARE YOUTUBE CHANNEL



Did you know that Playhouse Square has a YouTube Channel?

The channel houses dozens of videos about what is happening in the district. Learn about the upcoming Broadway season – See interviews with Dazzle Award winners – and of course – Joe Garry's Broadway Buzz for each performance of the season!

Click on the link below!

<https://www.youtube.com/@playhousesquare/videos>



FRONT OF HOUSE SPOTLIGHT

CONGRATULATIONS TO OUR NEWEST HOUSE MANAGERS!

The following began their new roles as House Managers on October 1st!



Jamie Degnovivo



Jim Martin



James Matthews

When you see them – be sure to say “Congratulations!”

ATTENDANCE POLICY REMINDER

The following was originally published in the July Monthly Newsletter. The policy has gone into effect this week.



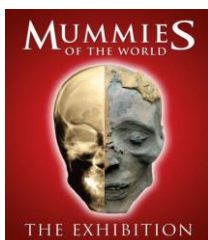
Did you know ---- 92% of our volunteers have an attendance percentage of 75% or better? Of those, 1,542 volunteers have a 95% or better attendance. That is incredible! Thank you for your commitment!

NEW POLICY EFFECTIVE OCTOBER 1, 2023:

If your attendance percentage is 25% or less, your status will automatically be changed to inactive.

If your attendance percentage falls between 26% - 50%, you will receive a written warning. If improvement is not shown within 6 months, your status will be changed to inactive.

If your attendance percentage falls between 51% - 75%, you will receive a written warning and your attendance will be monitored.



SHIFTS AVAILABLE:

- [SA 10/27 4:00 PM](#)
- [SA 10/28 4:30 PM](#)

UPCOMING WEEKS VOLUNTEER NEEDS AND RUNNING TIMES



DISNEY JUNIOR: COSTUME PALOOZA

KeyBank State Theatre || approx. 90 min.
October 14

- [WE 10/18 5:00 PM](#)



DRACULA: THE BLOODY TRUTH

Hanna Theatre || 150 min. w/ Intermission
October 20 – November 5

- [SA 10/21 6:00 PM](#)
- [SA 10/28 6:00 PM](#)



MARY SHELLEY'S FRANKENSTEIN

Outcalt Theatre || 150 min. w/ Intermission
October 21 – November 12

- [SA 10/21 6:00 PM](#)
- [WE 10/25 6:00 PM](#)
- [SA 10/28 6:00 PM](#)
- [SU 10/29 1:00 PM](#)



SPIDER-MAN: INTO THE SPIDER-VERSE

KeyBank State Theatre || approx. 90 min.
October 21

- [SA 10/21 6:30 PM](#)

GUEST EVACUATION TRAINING

- [SA 10/7 12:45 PM](#)
- [MO 10/16 5:45 PM](#)